

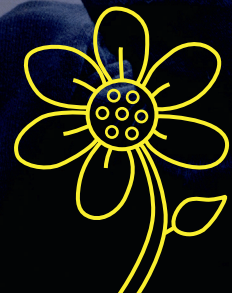


GARDENS

Top things to look out for on a visit to our historic gardens!



Tick the empty boxes as you go!



1 STATUES

Statues have been used in gardens in Britain since the Romans arrived in AD 43. Since then, many statues of heroes, gods and goddesses from Roman and Greek myths have continued to be made in the same Classical style that the Romans used.

📍 See me at: Osborne



2 WATER

Lots of people have a pond in their garden, but not many have a moat! Eltham Palace in London was once home to medieval kings and queens. Today, the moat is for decoration rather than defence, but you can still cross it using the medieval north bridge.

📍 See me at: Eltham Palace and Gardens



3 VEGETABLE PLOTS

Gardens aren't just beautiful, they can be useful too! At country houses like Audley End, fruit and vegetables were grown in kitchen gardens – meaning that the family had their very own supply of fresh produce for the cook to turn into delicious meals.

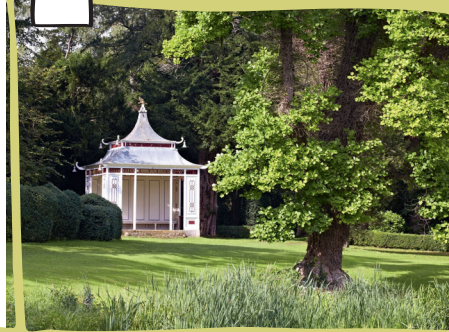
📍 See me at: Audley End House and Gardens



4 FOUNTAIN

Large fountains were a popular feature in formal gardens, and often included statues in their design. This fountain at Witley Court shows a scene from a Greek myth. Perseus on his horse is saving Andromeda from being eaten by a sea monster.

📍 See me at: **Witley Court and Gardens**



5 BUILDINGS

The Chinese Temple at Wrest Park was designed to be part of a tableau – a still scene from history or a story. It was built to look like the landscapes painted onto Chinese willow pattern plates, with a bridge nearby to finish the picture – can you find that too?

📍 See me at: **Wrest Park**



6 ROSES

The rose garden at Brodsworth Hall was originally created by the Thellusson family. Today, there are over 100 different types of roses planted there. See how many you can count – how do they look and smell different from each other?

📍 See me at: **Brodsworth Hall and Gardens**



7 WOODLAND

The woodland area at Walmer Castle is an important natural habitat for wildlife and plants. Can you spot all of the sculptures of woodland birds as you explore the play trail through the woods?

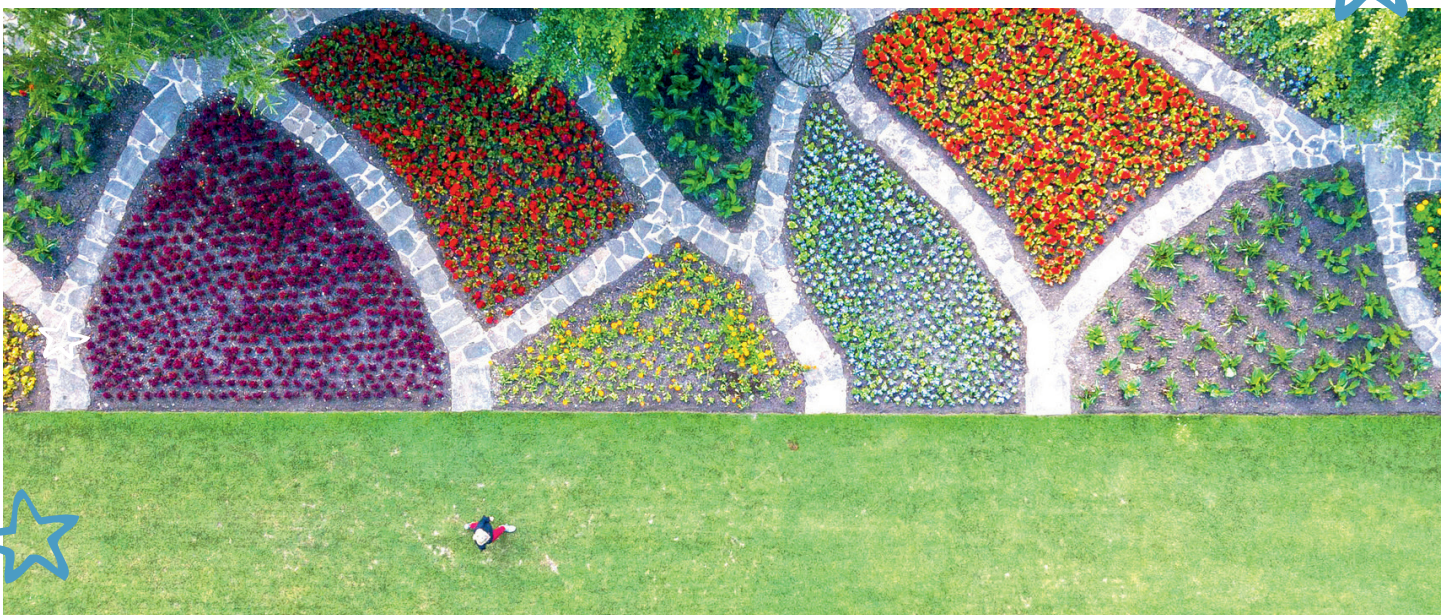
📍 See me at: **Walmer Castle and Gardens**



8 FERNS

Did you know that the Victorians were fanatical about ferns? Lots of wealthy Victorians collected these shade loving plants and grew them in special areas called ferneries, to show them off to their friends.

📍 See me at: **Belsay Hall, Castle and Gardens**



ENGLISH HERITAGE