

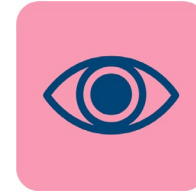


The Kenilworth Castle Story



Kenilworth Castle is a very big, old building where people lived a long time ago.

When I arrive at Kenilworth Castle



Outside, I might see:

The car park



A sign for Kenilworth Castle



The big Visitor Centre, made of wood



The castle buildings in the distance



At Kenilworth Castle



I might also see:

People who work at the castle. They wear a special uniform which looks like this:



If I need help during my visit I, or whoever is with me, can ask them.



When I visit Kenilworth Castle

I might:

Explore the buildings



Walk around or sit in the gardens



Learn more about the castle



Have something to eat or drink



When I visit Kenilworth Castle



Inside the castle grounds, I might see:

The castle buildings



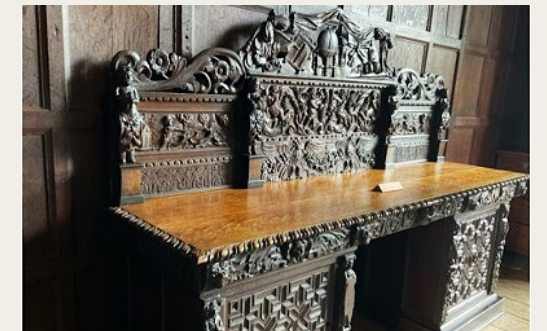
Gardens with trees and flowers



Signs which tell me about the castle



Old objects in the Gatehouse



Some of the castle walls are broken
because it is very old



Some parts of the castle are high up
because it is very tall



When I arrive at Kenilworth Castle



I might hear:

The birds tweeting in
the castle and
gardens



The water splashing in
the fountain



Aeroplanes flying
overhead



Music playing in the
cafe



At Kenilworth Castle

If it gets too noisy for me:

There are quieter places I can go to in the gardens



There are ear defenders I can borrow

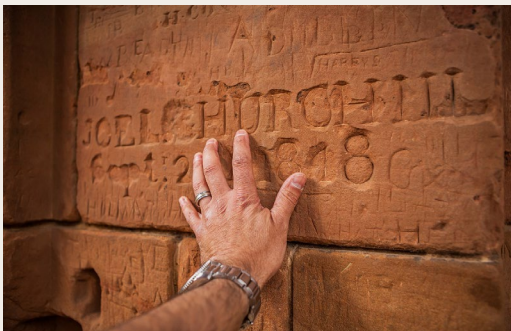


When I visit Kenilworth Castle



I might touch or feel:

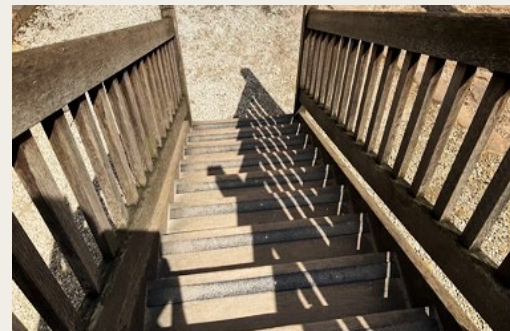
The rough stone of
the castle walls



Grass or gravel
underneath my feet



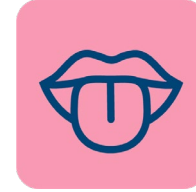
Wooden steps and
handrails



Leaves on the trees
and plants



When I visit Kenilworth Castle



I might taste:

Drinks and food which we can buy in the tearoom



My picnic, if we have brought one with us



When I visit Kenilworth Castle



I might smell:

The food in the tearoom



The flowers in the garden





Most of all [Kenilworth Castle](#) is a place where I can enjoy spending time with my family or whoever is with me.

Kenilworth Castle

Some additional information for my visit

The following links provide information on:

- [Directions to Kenilworth Castle](#)
- [Facilities](#)
- [Accessibility](#)
- [Food and Drink](#)



Kenilworth Castle

Some additional information for my visit

- There are quieter areas across the site. Details of these are available from any member of the Kenilworth team.
- Short, free familiarisation visits to Kenilworth can be arranged by contacting the team on [01926 852078](tel:01926852078).



Kenilworth Castle

Some additional information for my visit

- Kenilworth Castle has an Accessibility Champion and staff have received access and inclusion training. Any member of the Kenilworth team will be happy to help either before or during a visit and can be contacted using the above details.
- If you would like to give feedback about this guide or accessibility at Kenilworth Castle, please email access@english-heritage.org.uk or Kenilworth.Castle@english-heritage.org.uk





The Kenilworth Castle Story

Produced For English Heritage by Access & Inclusion UK 2023

www.accessandinclusion.com



ENGLISH
HERITAGE